

Teagle

TOMAHAWK

8200 Series Bale Processors



 **SYNCHRO**
START - STOP - RUN

teagle.co.uk   

TELEHANDLER



TOMAHAWK 6200H

CAPACITY 2.5m³

Distance : 13.5m

Handler : 2.8 tonnes (min.)

FEEDING | BEDDING



TOMAHAWK 8200 | M

CAPACITY 3.2m³

Distance : 20m

Tractor : 140HP (min.)



TOMAHAWK 8200 | T

CAPACITY 3.2m³

Distance : 20m

Tractor : 60HP (min.)



TOMAHAWK 8500

CAPACITY 4.5m³

Distance : 22-25m

Tractor : 80HP (min.)

FEEDING | BEDDING | PROCESS



TOMAHAWK 8250 | M

CAPACITY 3.2m³

Distance : 20m

Tractor : 150HP (min.)



TOMAHAWK 8250 | T

CAPACITY 3.2m³

Distance : 20m

Tractor : 80HP (min.)



TOMAHAWK 8550

CAPACITY 4.5m³

Distance : 22-25m

Tractor : 80HP (min.)

FEEDING | BEDDING



TOMAHAWK 9500

CAPACITY 8.0m³

Distance : 22-25m

Tractor : 80HP (min.)



TOMAHAWK 1010

CAPACITY 10.0m³

Distance : 22-25m

Tractor : 80HP (min.)



Established in 1937, Teagle Machinery began manufacturing the Tomahawk bale processor in 1983. We remain a family business focussed on meeting the needs of our customers whether just around the corner, or in one of the 50 countries worldwide to which we regularly ship machinery. From the outset, our machinery has been designed to be simple, robust and easy to use.

We still stand by these values, with all our products being tested extensively on farms throughout the world to ensure that they perform reliably day-in day-out, under the toughest conditions. As sales of Tomahawk bale processors continue to grow, the reasons that customers return time after time to buy from Teagle are twofold:

Product Focus - We actively invest in research, design and manufacturing technology to ensure that our product range constantly evolves to remain at the cutting edge, whilst being available at a competitive price. Through our focus on feeding and bedding machinery over the last 40 years we are able to offer a machine to fulfil your needs.

Backup – After-sales support is our priority, requiring commitment to a comprehensive parts stock and effective dealer network. We dedicate part of our 27,000m² facility in Cornwall to a substantial stock of wearing and non-wearing parts to keep you up and running.

BENEFITS

WHY OWN A BALE PROCESSOR

Saving you time and money!



FOR BEDDING

Labour saving - one person can quickly and easily bed livestock.

Save straw - users regularly report up to 30% savings. Straw is spread evenly across the entire bedding area. Only deliver as much straw as is required in each pen.

Cleaner and healthier livestock straw is lightly shredded for improved moisture absorbance and livestock comfort. Because straw is not chopped, the bed retains its structure to provide hygienic lying areas.

In cubicles - straw chopped/spread to suit your requirements.

Better manure - straw is incorporated with the muck more evenly for improved field application.

Safer bedding - no need to enter the pen.



FOR FEEDING

One machine, two jobs bed down and feed with the same machine.

Versatility - If you can bale a crop, we can shred it! Feed clamp or baled silage, hay and root crops.

Improve palatability - users report improved feed conversion of shredded bale silage.

Livestock cannot be selective wastage is reduced.



FOR PROCESSING

Pre-process straw for mixer wagons using our unique 'Dual Chop' system.

Improve efficiency - reduces mixer wagon processing time.

Effective feed conversion Precision cut straw stimulates digestion.

Prevent over-processing of silage in a Total Mixed Ration.

Process on demand - no need to stockpile.



VALUE FOR MONEY Impressive Payback

Existing Tomahawk owners have calculated an excellent return on investment when considering commodity values, tractor operating costs, hourly labour rates, improved livestock welfare and resale value; all of which contribute to making the Tomahawk the market leader.

TOMAHAWK MODELS



| | | Box Machines | | | Dual Chop | | Front Mounted |
|--------------------------------|------|--------------|------|------|-----------|------|---------------|
| | 8200 | 8500 | 9500 | 1010 | 8250* | 8555 | Telehawk* |
| Bedding Spread Straw | ✓ | ✓ | ✓ | ✓ | ✓ | ✓ | ✓ |
| Feeding Silage/Hay | ✓ | ✓ | ✓ | ✓ | ✗ | ✓ | ✗ |
| Short Chop To 50mm | ✗ | ✗ | ✗ | ✗ | ✓ | ✓ | ✗ |

* recommended max.20% moisture content

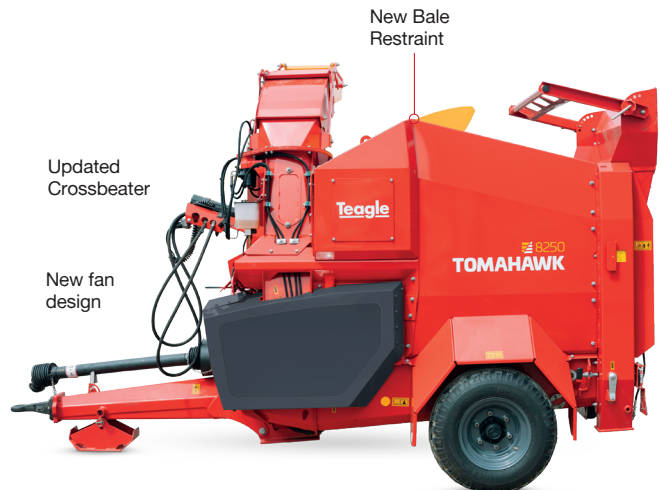
SETTING A NEW STANDARD In Bale Processing

Introducing the latest model to the market-leading bale processor range.

Redesigned from the ground up, retaining all the strength of the 7100 and 8100 models that the 8200 replaces.

The new 8200 series includes two models, both available mounted or trailed:

- **8200**-feeding silage and bedding straw.
- **8250**-dual chop for precision straw processing and bedding straw.



SYNCHRO START - STOP - RUN

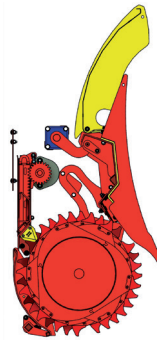


◀ Pause / Run modes to stop/start the flow of material at the touch of a button

◀ Adjustable bale restraint position to optimise output with straw/ silage

◀ WiFi control automatically synchronises bed chain speed and bale restraint position

◀ Prevent contact between bale and crossbeater on start-up



NEW DUAL CHOP CROSSBEATER

The unique 8250 Dual Chop design for processing short material has been substantially updated with a 40% increase in the cutting speed (now over 65,000 scissor chops per minute) to provide a fine and consistent chop length.

PAINT LINE INVESTMENT

As part of our commitment to improving product quality, we are proud to introduce our ALL-NEW DOUBLE POWDER COAT PAINT LINE facility. Housed in a new purpose built 1,900m² building, our new paint line replaces our previous single power coat line and delivers market leading paint quality.

The new system features state of the art automation through the following processes:

- 1 **Shot blasting**
- 2 **Primer Powder Application**
- 3 **Green Cure Oven**
- 4 **Top Coat Powder Application**
- 5 **Final Cure Oven**
- 6 **Quality Inspection**

The full powder recovery system cleans and recycles unused powder resulting in zero waste.

To improve paint adhesion, we have also invested heavily in our prepaint

processes, with parts cleaned and processed through a linishing machine, removing sharp edges and reducing the risk of paint failure on edges.

The result is a rounded edge, benefiting from two applications of powder coat paint which offers much greater protection from corrosion and chemical attack.

Our in-house quality control includes 1,000 hours of salt spray testing on sample parts to replicate a 10 year operating life.



Automated Shotblaster



Primer Powder Booth



Top Coat Powder Application



Quality Control Inspection

FEEDING bedding

8200M Mounted | 8200T Trailed

Save time feeding baled or clamp silage along a barrier; save straw spreading bales in loose housing areas. The all-new SYNCHRO system manages the position of the bale restraint and bed chain speed for straightforward control of processing and the start/stop function.

We have the right solution for you

A red Teagle 8200M Mounted Feeding Bedding machine is shown in a barn, being driven by a green tractor. The machine is spreading straw bedding along a barrier. The Teagle logo is visible on the side of the machine. The tractor is a John Deere S780. The barn has a concrete floor and metal walls. A cow is visible in the foreground on the right.

Teagle

8200M | MOUNTED

TYPE **FEED SILAGE, SPREAD STRAW**

Three point mounted for improved manoeuvrability and easier reversing.



Standard equipment

Electronic in-cab controls | Swivel chute with 280° deg. rotation | Single crossbeater | Adjustable feed slide | Remote tailgate switch | Slip and overrun clutch on PTO | Bed speed indicator

Optional equipment

Hydroshield - dust suppression | Hydraulic filter | Automatic chain lubrication system | LED road lighting kit | Extra blade kit | Ski-jump chute

| | A = Overall Height (m) | B = Overall Width (m) | C = Overall Length Tailgate up (m) | Tailgate down (m) | Capacity m ³ | No. Bales 5' Round | No. Bales 8' Rectangular | Power min | Weight |
|--------------|------------------------|-----------------------|------------------------------------|-------------------|-------------------------|--------------------|--------------------------|-----------|--------|
| 8200M | 2.43 | 1.87 | 3.02 | 4.88 | 3.2 | 2 | 1 (4'x3') 1 (4'x4') | 140 | 2,022 |

8200T | TRAILED

TYPE **FEED SILAGE, SPREAD STRAW**

The farmers favourite for smaller tractors and convenient hitching to tractor.



Standard equipment

Electronic in-cab controls | Swivel chute with 280° deg. rotation | Single crossbeater | Adjustable feed slide | Remote tailgate switch | Slip and overrun clutch on PTO | Bed speed indicator | 10.5/15 wheels with mudguards | LED road lighting kit

Optional equipment

Hydroshield - dust suppression | Hydraulic filter | Automatic chain lubrication system | Extra blade kit | Ski-jump chute | Oversize 12.5 wheels | Wide angle PTO

| | A = Overall Height (m) | B = Overall Width (m) | C = Overall Length Tailgate up (m) | Tailgate down (m) | Capacity m ³ | No. Bales 5' Round | No. Bales 8' Rectangular | Power min | Weight |
|--------------|------------------------|-----------------------|------------------------------------|-------------------|-------------------------|--------------------|--------------------------|-----------|--------|
| 8200T | 2.57 | 2.03 | 4.12 | 5.98 | 3.2 | 2 | 1 (4'x3') 1 (4'x4') | 60 | 2,213 |

Option details see page 5

FEATURES options



The 'SYNCHRO' control system in both models offers the operator:

Pause/Run modes to stop/start the flow of material at the touch of a button

Adjustable bale restraint position to optimise output with straw/silage

Simplified controls by electronically synchronising bed chain speed and bale restraint position via a single dial

Loading setting (Pause) to prevent contact between the bale and the crossbeater on start-up



All managed through our tried and tested Tethered WiFi control desk that has been updated to include the new functions and reconfigured to improve operator comfort.



WATCH THE VIDEO



Automatic Chain Oiler

Recommended for extended hours of processing. (Standard on 8250).



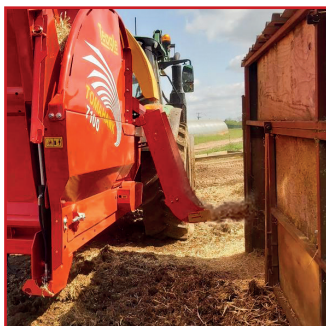
Road Lighting Kit

Essential for highway use, the front and rear markers ensure that you operate safely when travelling on the road. (standard on trailed models).



In-Line High Pressure Filter

In-line high pressure filter prevents contamination from damaging the valve equipment.



Ski Jump Chute

The optional 'Ski Jump Chute' complete with adjustable comb and extended beak is **perfect for bedding pig arcs** and mulching fruit trees.



Swivel Chute Insert

A wedge shaped insert makes it easier to spread wide areas.



With its **unique 5-point action**, straw is sprayed with a high-pressure fine water mist reducing inhalable dust particles by over 40%.



TOMAHAWK 8200

IT SAVES A LOT OF LABOUR



FEEDS
CLAMP/BALED SILAGE

SPREADS
STRAW UP TO 20M

CAPACITY
3.2M³

Matt Annear at Tregair Farm nr. Newquay, Cornwall

"There are some great features on the new machine and it makes the jobs of bedding and feeding easier. We save at least half an hour each time by bedding with the Teagle compared to our usual bale processor.

We have been using the 2 new modes on the control box. The straw setting which is more aggressive and flies

through the bales and then the silage mode which is less aggressive, giving the beater more time to thoroughly rip the bales apart."

"The silage is chopped well and the cattle eat all of it. We have only had the machine 4 months, but we can already see the daily gains."

"The cattle now eat all of the feed and there is no waste, they even look healthier and happier.

Central greasing makes maintenance of the machine straightforward and easy, then the mudguards keep the machine clean.

It's stuck the tough conditions we've given it here and I would be happy to recommend it to anyone else."



WATCH
THE VIDEO

FEEDING bedding

8250M DUAL CHOP | 8250T DUAL CHOP

Spread straw long for loose housing, or chop it short at the touch of a button for feed processing or cubicle bedding. The 3rd Generation "Dual Chop" system has a greater chopping speed to deliver a finer and more consistent output. The screen size is also 40% larger to increase chopping output. The all-new SYNCHRO control manages position of the bale restraint and bed chain speed for straightforward control of processing speed and start/stop function..

We have the right solution for you



8250M | MOUNTED

TYPE **PROCESS SHORT STRAW, SPREAD LONG STRAW**

Three point mounted for improved manoeuvrability and easier reversing.



Standard equipment

Electronic in-cab controls | Swivel chute with 280° deg. rotation | Single crossbeater | Adjustable feed slide | Remote tailgate switch
Slip and overrun clutch on PTO | Bed speed indicator | Automatic chain lubrication system

Optional equipment

Hydroshield - dust suppression | Hydraulic filter | LED road lighting kit | Ski-jump chute

| | A = Overall Height (m) | B = Overall Width (m) | C = Overall Length Tailgate up (m) | Tailgate down (m) | Capacity m ³ | No. Bales 5' Round | No. Bales 8' Rectangular | Power min | Weight |
|--------------|------------------------|-----------------------|------------------------------------|-------------------|-------------------------|--------------------|--------------------------|-----------|--------|
| 8250M | 2.43 | 1.87 | 3.02 | 4.88 | 3.2 | 2 | 1 (4'x3') 1 (4'x4') | 150 | 2,166 |

8250T | TRAILED

TYPE **PROCESS SHORT STRAW, SPREAD LONG STRAW**

The farmers favourite for smaller tractors and convenient hitching to tractor.



Standard equipment

Electronic in-cab controls | Swivel chute with 280° deg. rotation | Single crossbeater | Adjustable feed slide | Remote tailgate switch
Slip and overrun clutch on PTO | Bed speed indicator | 10.5/15 wheels with mudguards | LED road lighting kit | Auto chain lubrication system

Optional equipment

Hydroshield - dust suppression | Hydraulic filter | Ski-jump chute | Oversize 12.5 wheels | Wide angle PTO

| | A = Overall Height (m) | B = Overall Width (m) | C = Overall Length Tailgate up (m) | Tailgate down (m) | Capacity m ³ | No. Bales 5' Round | No. Bales 8' Rectangular | Power min | Weight |
|--------------|------------------------|-----------------------|------------------------------------|-------------------|-------------------------|--------------------|--------------------------|-----------|--------|
| 8250T | 2.57 | 2.03 | 4.12 | 5.98 | 3.2 | 2 | 1 (4'x3') 1 (4'x4') | 80 | 2,357 |

Option details see page 5

DUAL chop



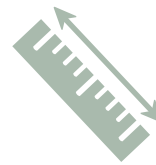
Save time and fuel

Time and fuel can be saved by processing straw prior to it being added to the ration in a diet feeder. Over 65,000 chops per minute offers fast and consistent output.



No over processing

Pre-process straw so that the diet feeder does not need to mix for as long, to prevent over processing the ration.



Short chop length

Chopping down to an average of 50mm, with clean cut ends, means you can produce the ideal material for feeding to create effective rumen stimulation and increased milk yields.

CHOP SHORT/SPREAD LONG at the touch of a button

The 'Dual Chop' system incorporates a set of retractable blades that can be repositioned at the touch of a button, changing straw output from short chop (around 50mm) to no chop, and back again in a matter of seconds.

1 | Crossbeater

Straw is teased from the bale by hooks on the crossbeater.

2 | Blades

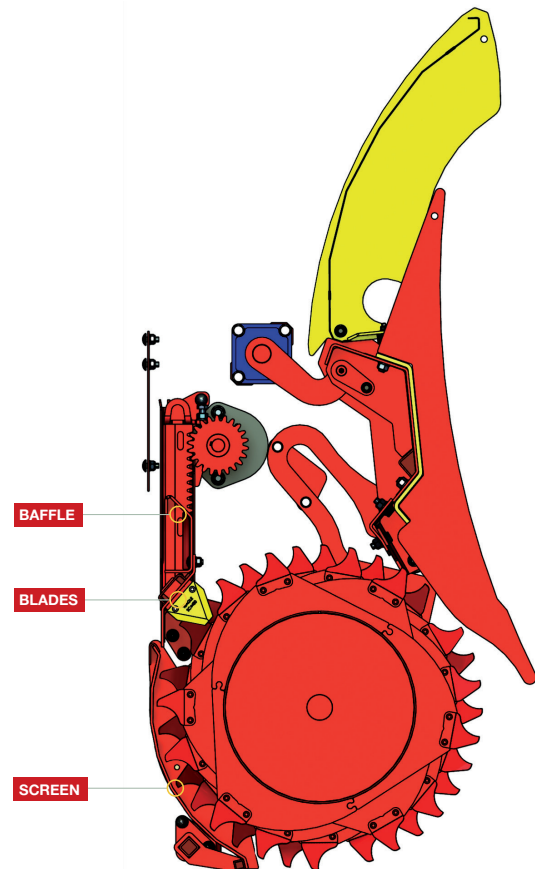
When the blades are lowered, straw is chopped using a scissor action.

3 | Screen

The straw then passes over a screen located behind the knife cassette. If the straw is too long it is recirculated through the blades by the crossbeater.

4 | Baffle plate

When the blades and baffle plate are raised, straw passes above the screen and is discharged, without being chopped.



CHOP STRAW SHORT*



- POULTRY & CUBICLE BEDDING
- TMR PRE-PROCESSING

SPREAD LONG STRAW



- LOOSE HOUSING
- LANDSCAPING/MULCHING

DISTRIBUTE HAY SHORT*



- TMR PRE-PROCESSING
- BARRIER FEEDING

* Recommended <20% moisture content



TOMAHAWK 8250 IT'S A BREEZE TO HITCH



FEEDS
CLAMP/BALED SILAGE

SPREADS
STRAW UP TO 20M

CAPACITY
3.2M³

Adam Lovatt (left) & Greg Gray at Clinton Devon Farm Partnership, Devon

"In the last 4 months we've put over 400 bales through the machine with no faults at all, there's a handy little device on the control box, a button to press, if you feel the machine struggling a bit you press this button and it takes all the pressure off, gives it a chance to clear itself, then you press the button again and it'll continue flowing through.

We previously had the 7100, but this 8250 is so much better, the 7100 was a great machine but this is just a real good step up.

You've got two (new) settings on the control box, a setting for chopping straw short for feed at a certain speed and a setting for bedding up. You can just press a button and it'll stop everything in an instant which is a fantastic feature."

"Just a press of the button and you can stop everything in an instant."

"The main difference is the time hitching on, it's a breeze to hitch and it doesn't matter what tractor you use."



WATCH
THE VIDEO

SPECIFICATIONS



6100H

6200H

8200 M

8200 T

8250 M

| | | | | | |
|---|-------------------|---------------------|---------------------|---------------|-------------|
| Chute | Swivel | Swivel | Swivel | Swivel | Swivel |
| Dual Chop | No | No | No | No | Yes |
| Silage | No | No | Yes | Yes | No |
| Straw | Spread | Spread | Spread | Spread | Chop/Spread |
| Crossbeaters | 1 | 1 | 1 | 1 | 1 |
| Capacity (m ³) | 1.7 | 2.5 | 3.2 | 3.2 | 3.2 |
| No. of 5' round bales | 1 | 1 | 2 | 2 | 2 |
| No. of 8' rect' bales (4'x 2'6"/ 4'x4') | 0.5 | 1/1 | 1/1 | 1/1 | 1/1 |
| Bale chamber (tailgate down) W x H x L | 1.27 x 0.8 x 1.24 | 1.43 x 1.20 x 2.90m | 1.43 x 1.35 x 3.00m | | |
| Blow distance (max.) | 12m | 13.5m | 20m | 20m | 20m |
| Min. tractor PTO HP | 70HP | 80HP | 140HP | 60HP | 150HP |
| Overall width (chute closed) | ◆ 1.72 ✦ 1.80m | 1.69m | 1.87m | 2.03m | 1.87m |
| Overall length (tailgate up) | 2.43m | 2.70m | 3.02m | 4.12m | 3.02m |
| Overall length (tailgate/bale clamp down) | 2.69m | 4.0m | 4.88m | 5.98m | 4.88m |
| Overall height (chute closed) | 2.05m | 2.52m | 2.43m | 2.57m | 2.43m |
| Unladen weight | ◆ 777 ✦ 858kg | 1510kg | 2022kg | 2213kg | 2166kg |
| Tyre size | N/A | N/A | N/A | 10.00/75-15.3 | N/A |
| Oil flow rate (min/max) (l/min) | 40 - 75 | 60 - 120 | 35 - 60 | 35 - 60 | 35 - 60 |

◆ = standard machine ✦ = with bale clamp fitted

| Standard/Optional Equipment | 6100H | 6200H | 8200M | 8200T | 8250M |
|------------------------------|-------|-------|-------|-------|-------|
| Side discharge chute | N/A | N/A | N/A | N/A | N/A |
| Hydro shield | N/A | N/A | □ | □ | □ |
| Tailgate Extension | N/A | N/A | N/A | N/A | N/A |
| In-Line High Pressure Filter | N/A | □ | □ | □ | □ |
| Clevis Drawbar & Jack | N/A | N/A | N/A | □ | N/A |
| Wide Angle PTO | N/A | N/A | N/A | □ | N/A |
| Swivel Chute Extension | N/A | N/A | □ | □ | □ |
| Auto Chain Lubrication | N/A | N/A | □ | □ | ■ |
| Ski-Jump Chute | N/A | □ | □ | □ | □ |
| SYNCHRO Control | N/A | N/A | ■ | ■ | ■ |

Key: □ Optional Equipment ■ Standard Specification N/A Not Available

SPECIFICATIONS



8250 T 8500 SC 8555 SC 9500 9500 SC 1010 1010 SC

| | | | | | | |
|---------------------|---------------------|---------|---------------------|---------|---------------------|---------|
| Swivel | Swivel | Swivel | Side | Swivel | Side | Swivel |
| Yes | No | Yes | No | No | No | No |
| No | Yes | Yes | Yes*** | Yes*** | Yes*** | Yes*** |
| Chop/Spread | Yes | Yes | Yes | Yes | Yes | Yes |
| 1 | 1 | 1 | 2 | 2 | 2 | 2 |
| 3.2 | 4.5 | 4.5 | 8.0 | 8.0 | 10.0 | 10.0 |
| 2 | 2 | 2 | 3 | 3 | 3*** | 3*** |
| 1/1 | 1/1 | 1/1 | 2/1 | 2/1 | 4/2 | 4/2 |
| 1.43 x 1.35 x 3.00m | 1.70 x 1.25 x 2.98m | | 1.70 x 1.55 x 4.00m | | 1.70 x 1.58 x 5.70m | |
| 20m | 22m | 22m | 25m | 22m | 25m | 22m |
| 80HP | 80HP | 80HP | 80HP | 80HP | 80HP | 80HP |
| 2.03m | 2.16m | 2.16m | 2.49m | 2.21m | 2.42m | 2.42m |
| 4.12m | 4.14m | 4.14m | 5.2m | 5.2m | 6.17m | 6.17m |
| 5.98m | 5.38m | 5.38m | 6.33m | 6.33m | 7.96m | 7.96m |
| 2.57m | 2.77m | 2.77m | 2.9m | 2.9m | 2.93m | 2.93m |
| 2357kg | 2080kg | 2415kg | 3007kg | 3017kg | 3580kg | 3590kg |
| 10.00/75-15.3 | 12.50/80-15.3 | | 305/55 R22 | | 385/55 R22.5 | |
| 35 - 60 | 35 - 60 | 35 - 60 | 35 - 60 | 35 - 60 | 35 - 60 | 35 - 60 |

8250T 8500 SC 8555 SC 9500 9500 SC 1010 1010 SC

| | | | | | | |
|-----|-----|-----|-----|-----|-----|-----|
| N/A | N/A | N/A | ■ | N/A | ■ | N/A |
| □ | □ | □ | □ | □ | □ | □ |
| N/A | □ | □ | □ | □ | ■ | ■ |
| □ | □ | □ | □ | □ | ■ | ■ |
| □ | □ | □ | □ | □ | □ | □ |
| □ | □ | □ | □ | □ | □ | □ |
| □ | □ | □ | □ | □ | □ | □ |
| ■ | □ | ■ | □ | □ | □ | □ |
| □ | □ | □ | N/A | □ | N/A | □ |
| ■ | N/A | N/A | N/A | N/A | N/A | N/A |

The company's policy is one of continuous improvement and development, therefore specifications are subject to change without prior notice.

Teagle

With over **85 years** experience in designing and manufacturing of agricultural machinery you can be confident when you choose Teagle.

Contact us today to discuss your individual requirements.

CALL OUR SALES OFFICE
01872 560592



AREA MANAGER - SOUTH WEST

Mike Sanders 07970 836705
mike.sanders@teagle.co.uk

AREA MANAGER - SOUTH EAST

Chris White 07970 136614
chris.white@teagle.co.uk

AREA MANAGER - WEST

Steve Offland 07970 462240
steve.offland@teagle.co.uk

AREA MANAGER - NORTH

Gary Eastham 07866 532666
gary.eastham@teagle.co.uk

AREA MANAGER - SCOTLAND

Duncan Hood 07970 136616
duncan.hood@teagle.co.uk

AREA MANAGER - IRELAND AND NI

Frank Byrne +353 (0)871 948404
frank.byrne@teagle.ie



Tomahawk 6100H






Tomahawk 505FSM



Tomahawk C120

View our full range at teagle.co.uk

Teagle Machinery Ltd Blackwater, Truro, Cornwall TR4 8HQ

sales@teagle.co.uk www.teagle.co.uk Tel: +44 (0)1872 560592    teagle.co.uk

TOM8200BOBEUK